

Wainwright Drive



carport c.p.

E
C
C
C
E

B
A
B
F
F

D B A B F

D
A
D
B
B
D
A
D

c.p.

carport

c.p.

carport

carport

B
B
B
A
B
D

F
F
F
F

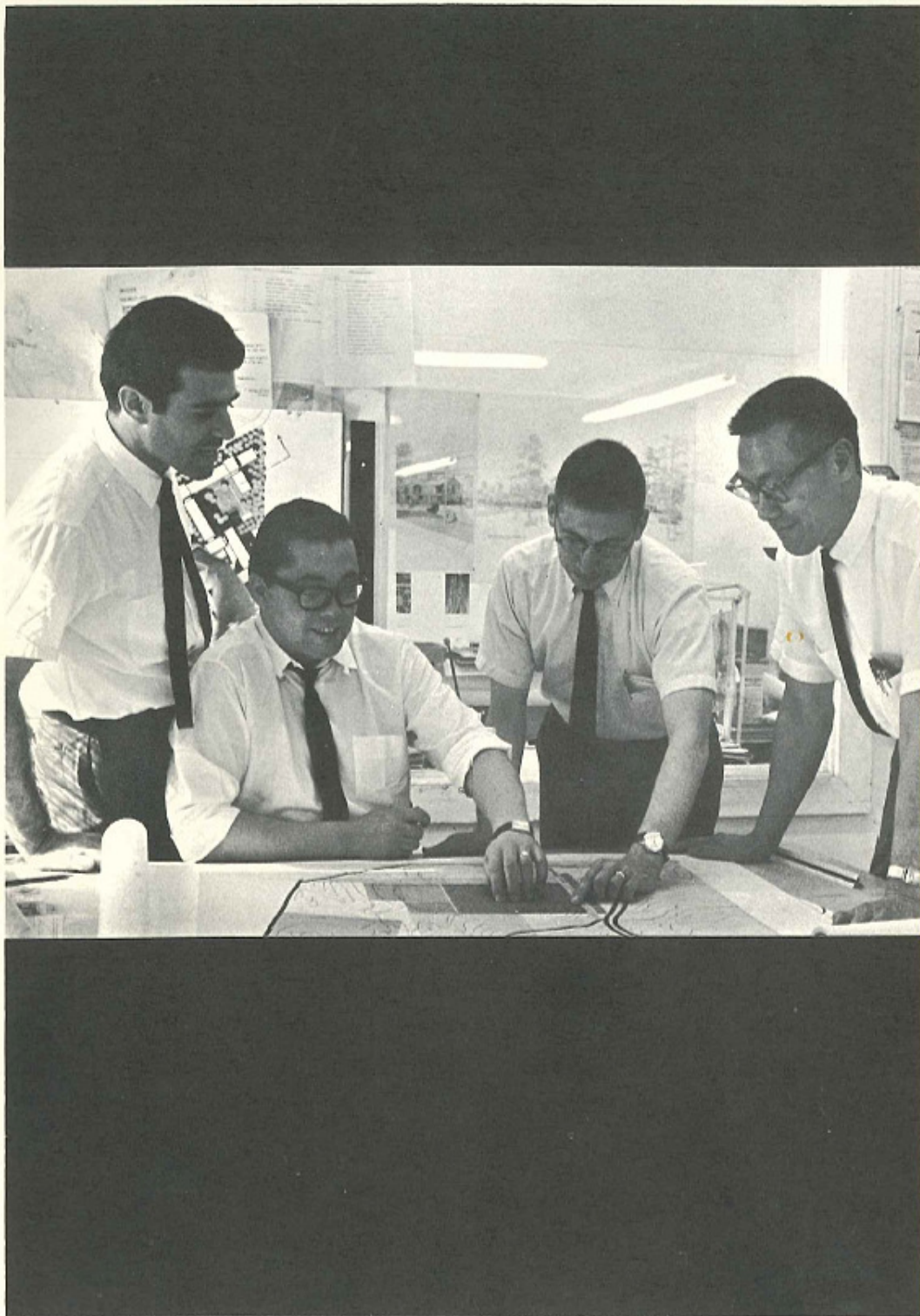
- A—The AXTON
- B—The BLUEFIELD
- C—The CHERITON
- D—The DILWYN
- E—The ETTRICK
- F—The FIELDALE

D
A
D

E
C
C

F
F

Townhouse Locations:
WAINWRIGHT CLUSTER in VANTAGE HILL,
RESTON, VIRGINIA



WAINWRIGHT CLUSTER, RESTON, VIRGINIA

Townhouses by The PARD TEAM

PARD stands for Planning, Architecture, Research and Design.

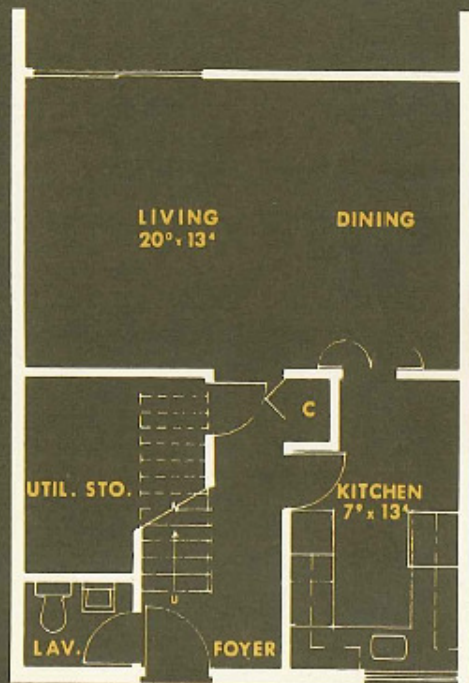
A new approach to architecture, planning and design problems is the hallmark of PARD TEAM, an unusual combination of talented architects, planners and designers.

Their experience and special expertise fit exactly the Reston mood of innovation in urban living. That same mood has been reflected in the Wainwright Townhouses PARD TEAM has designed for Reston.

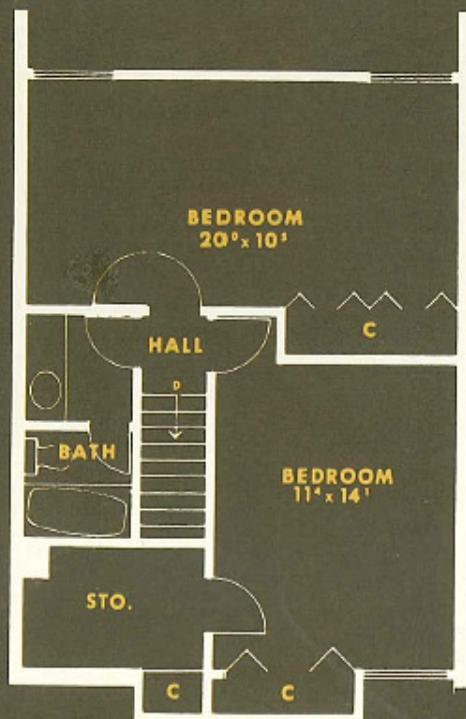
The Team was formed by Samuel E. Mintz in July, 1964 "to meet the architectural and planning challenges created by the uncontrolled urbanization of our environment, the new discoveries in the fields of social and scientific research, and the rapid changes in building technology."

With offices in Boston and Washington, D.C., PARD TEAM is currently engaged in architectural, planning and design projects in Philadelphia and Boston, as well as Reston. Since 1964 PARD TEAM projects have included the Reynolds Metals Building in Pennsylvania, a recreational complex, a nursery school day care center and the master plan for Watertown Arsenal Site in Massachusetts; as well as many other development studies and proposals.

Senior members of the Team include Kiyoshi Mano, Sidney Swidler and Fernando Migliassi.

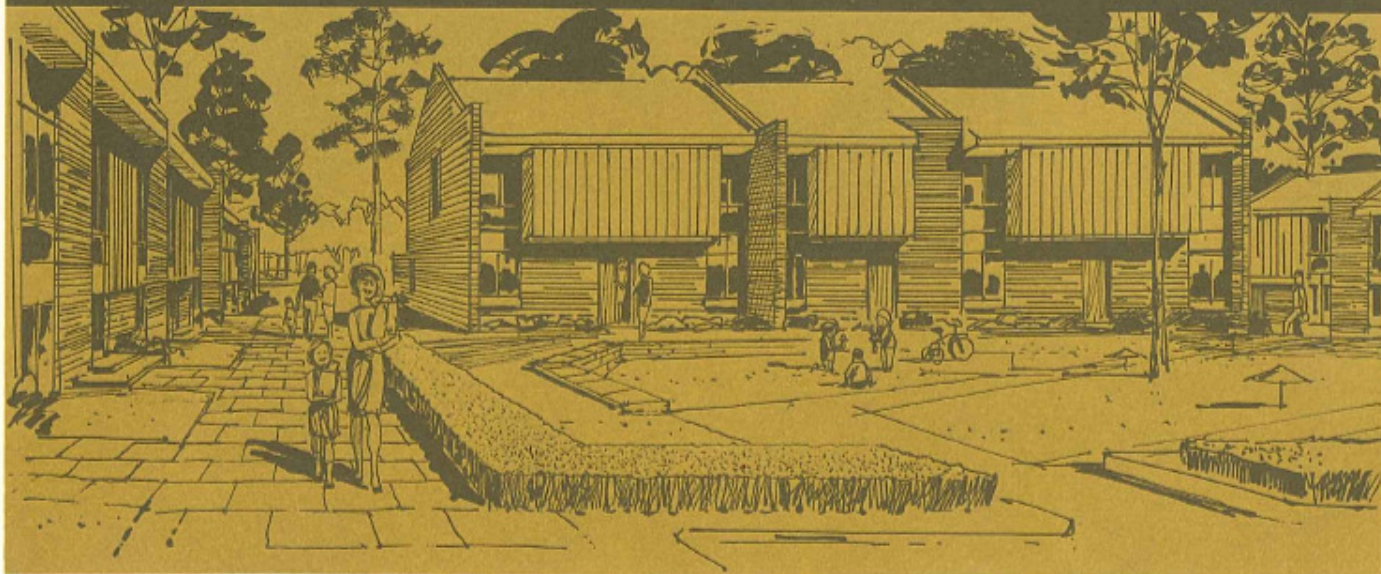


FIRST FLOOR



SECOND FLOOR

THE AXTON—Two spacious bedrooms with extra large closets and storage areas, large compartmented bath with dressing table. Wide living room-dining room area, more storage and powder room on first floor. All dimensions approximate.



WAINWRIGHT CLUSTER RESTON, VIRGINIA

The Wainwright section of Reston is in Lake Anne Village, minutes away from beautiful Lake Anne, shopping, and the community center. Reston's new campus elementary school is a short walk away. Golf, tennis, boating, swimming, fishing, ball fields and riding are all nearby.

Life Reston style is a quiet retreat from the urban jam, or an active sports-filled community life. Or both. Have it your way.

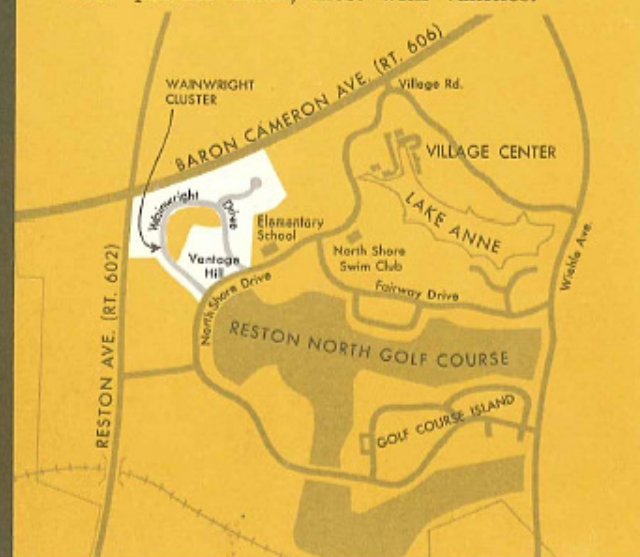
The Townhouses

Grouped in small, neighborhood clusters, the Wainwright Townhouses have been carefully designed to blend with the rolling countryside. Each group surrounds a private, landscaped green which separates the houses from the carports. All homes are entered from the green; all have views of woodland.

Natural building materials, brick, wood stained in muted earth colors and extensive planting further relate these modern, efficient homes to the Virginia hills.

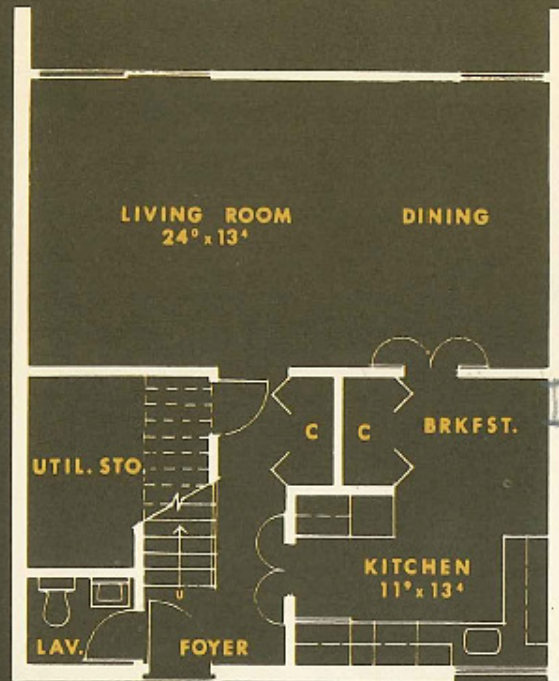
Make Your Choice

There are six Wainwright models. Each has an outdoor patio, parking area, large interior and exterior storage space, spacious bedrooms with large closets and central air-conditioning. Kitchens are color coordinated, featuring G.E. appliances, and family sized breakfast rooms. Every home has a ground floor powder room, most with vanities.

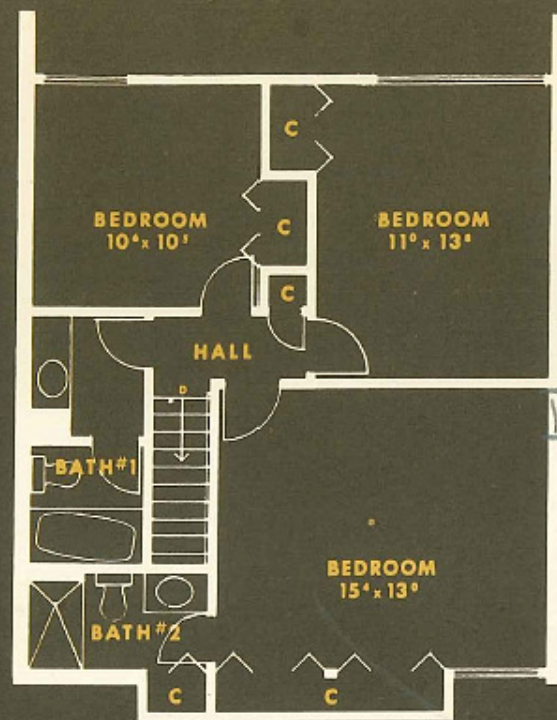




THE AXTON—features a beautiful, spacious master bedroom with large windows and walk-in closets.

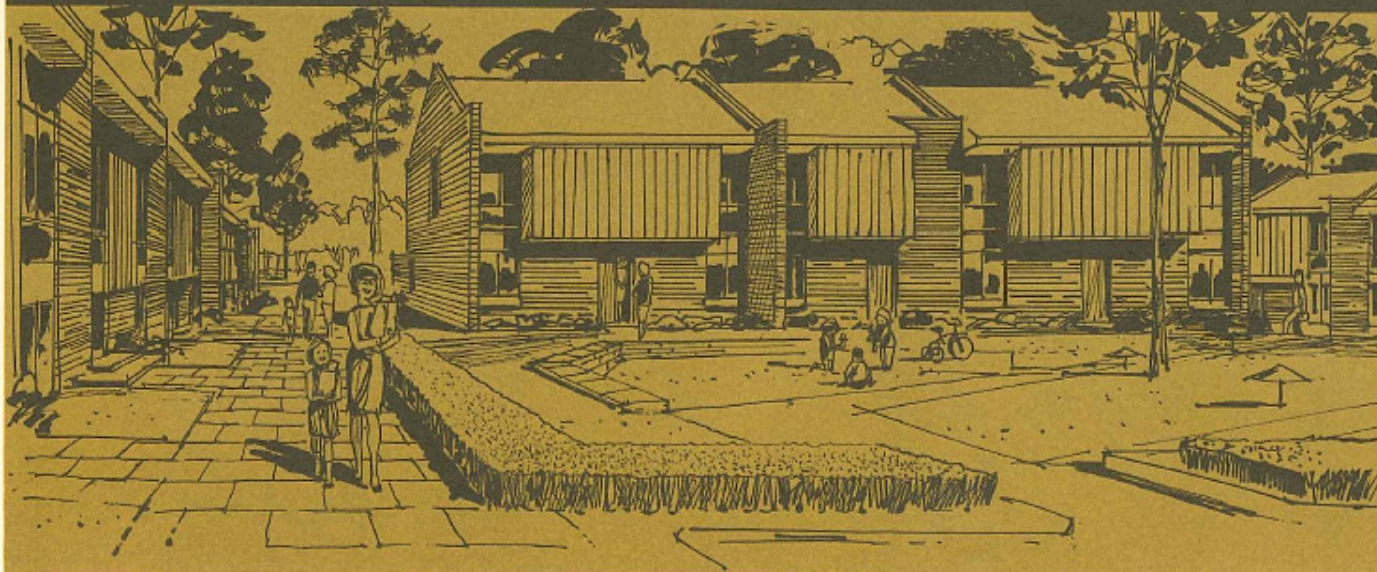


FIRST FLOOR



SECOND FLOOR

THE BLUEFIELD—Large living-dining room with sliding glass doors. Kitchen has separate breakfast area. Powder room and kitchen open off entrance foyer. Three bedrooms, two full baths, closets and storage everywhere. All dimensions approximate.



WAINWRIGHT CLUSTER RESTON, VIRGINIA

The Wainwright section of Reston is in Lake Anne Village, minutes away from beautiful Lake Anne, shopping, and the community center. Reston's new campus elementary school is a short walk away. Golf, tennis, boating, swimming, fishing, ball fields and riding are all nearby.

Life Reston style is a quiet retreat from the urban jam, or an active sports-filled community life. Or both. Have it your way.

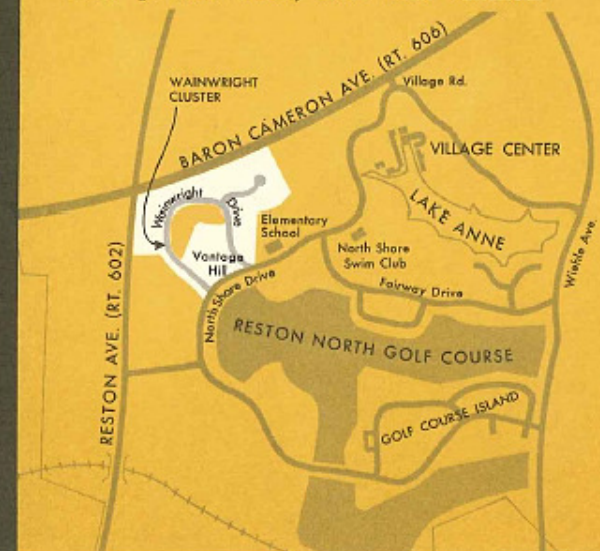
The Townhouses

Grouped in small, neighborhood clusters, the Wainwright Townhouses have been carefully designed to blend with the rolling countryside. Each group surrounds a private, landscaped green which separates the houses from the carports. All homes are entered from the green; all have views of woodland.

Natural building materials, brick, wood stained in muted earth colors and extensive planting further relate these modern, efficient homes to the Virginia hills.

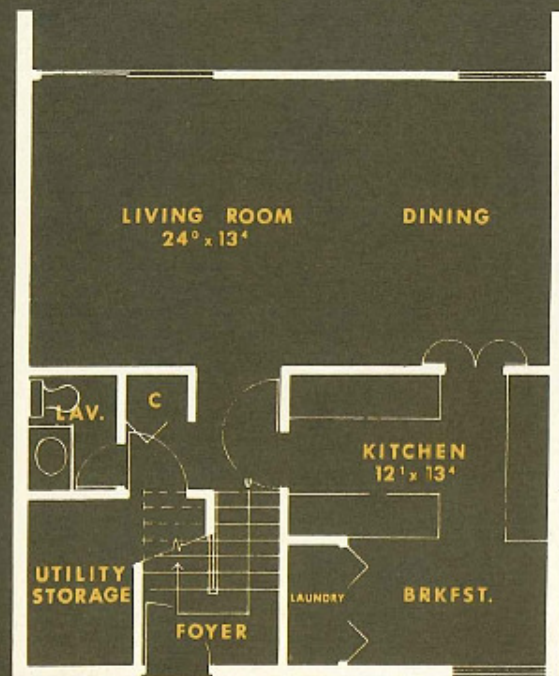
Make Your Choice

There are six Wainwright models. Each has an outdoor patio, parking area, large interior and exterior storage space, spacious bedrooms with large closets and central air-conditioning. Kitchens are color coordinated, featuring G.E. appliances, and family sized breakfast rooms. Every home has a ground floor powder room, most with vanities.

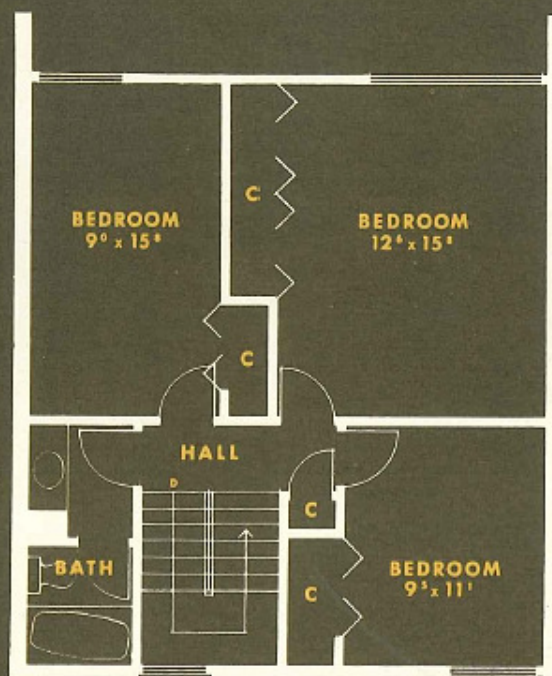




THE BLUEFIELD—living-dining room is 24 feet long with a special entrance to the spacious kitchen.

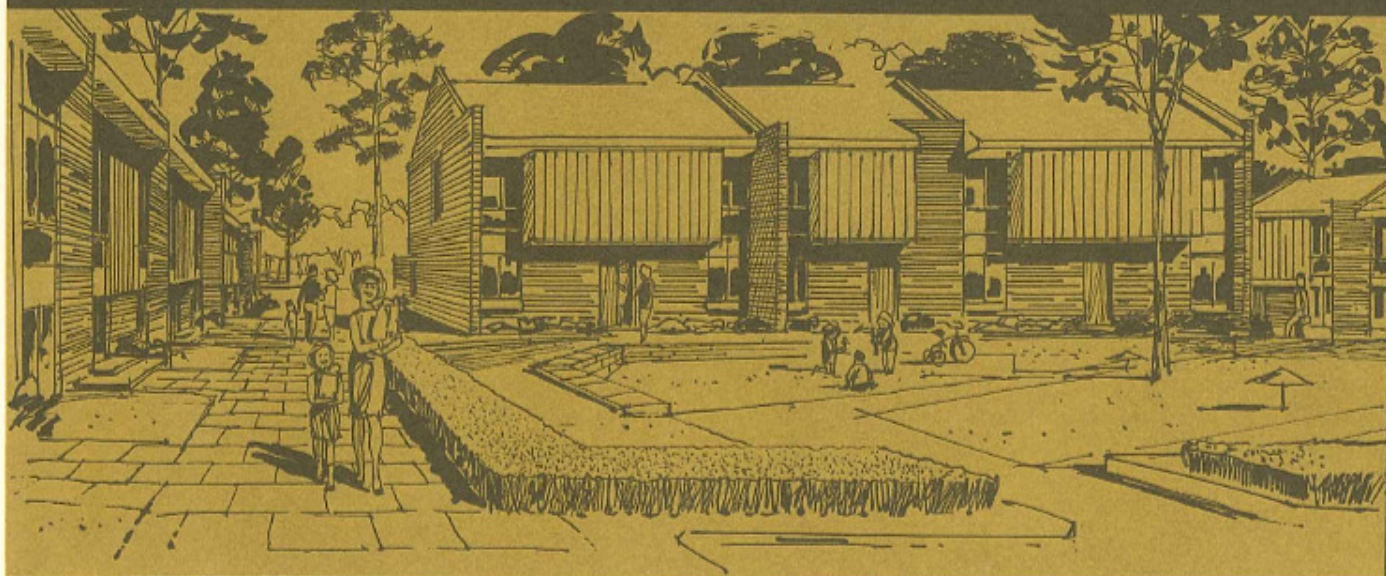


FIRST FLOOR



SECOND FLOOR

THE CHERITON—Extra large living-dining room opens into fully equipped G.E. kitchen with separate breakfast space. Powder room on first floor. Three large bedrooms and compartmented bath on second floor. All dimensions approximate.



WAINWRIGHT CLUSTER RESTON, VIRGINIA

The Wainwright section of Reston is in Lake Anne Village, minutes away from beautiful Lake Anne, shopping, and the community center. Reston's new campus elementary school is a short walk away. Golf, tennis, boating, swimming, fishing, ball fields and riding are all nearby.

Life Reston style is a quiet retreat from the urban jam, or an active sports-filled community life. Or both. Have it your way.

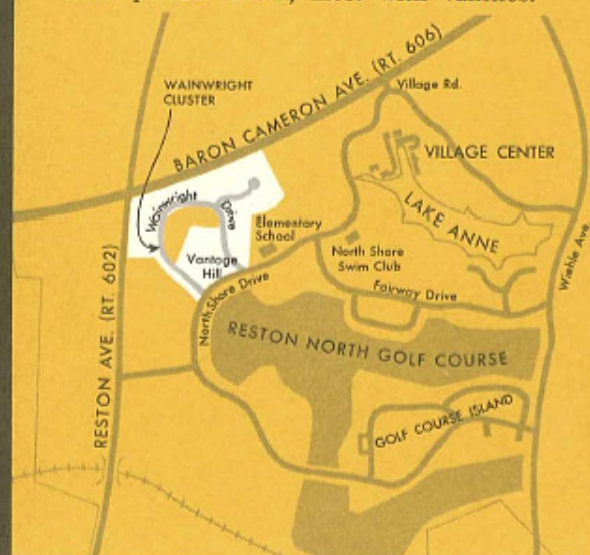
The Townhouses

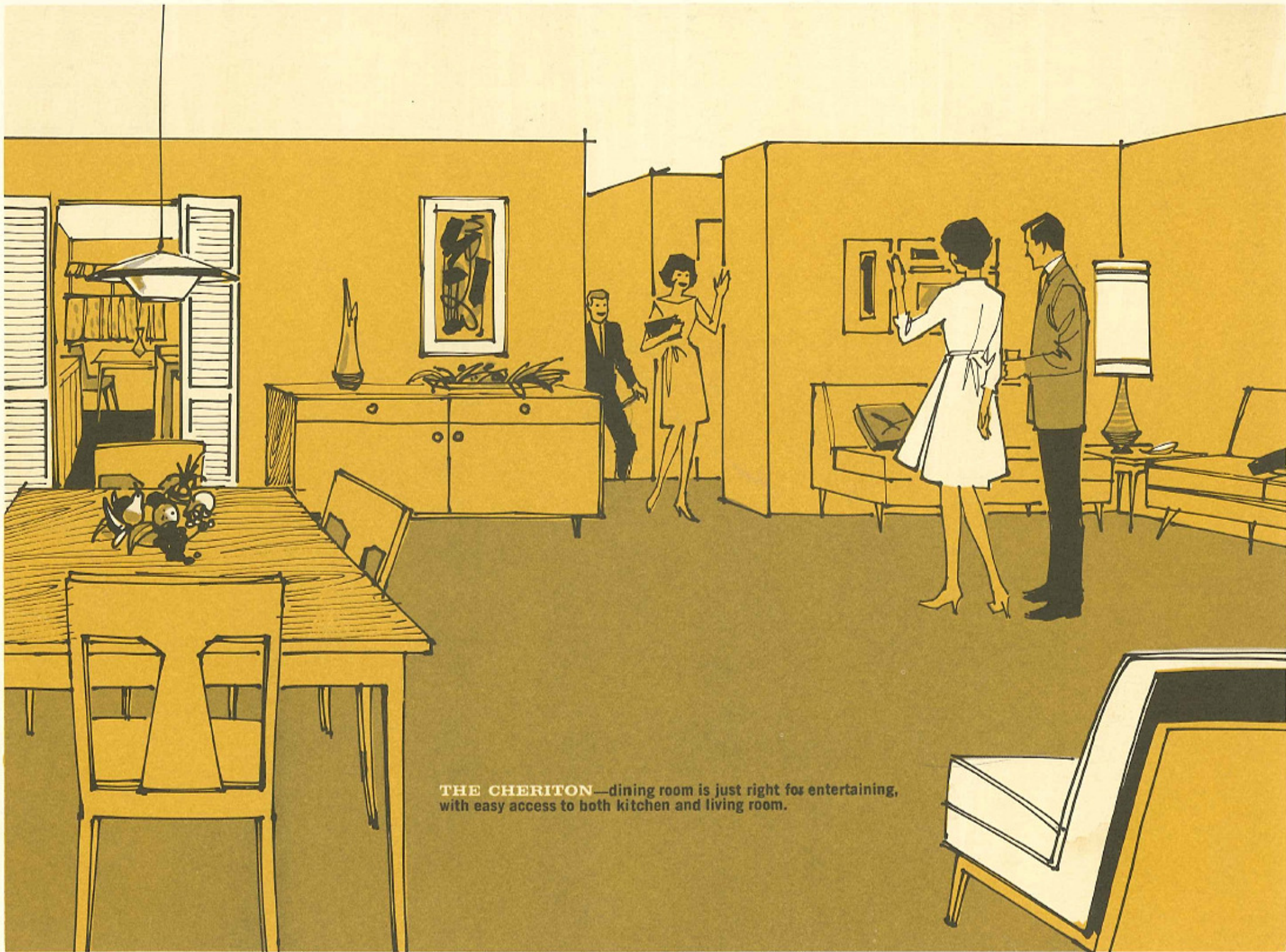
Grouped in small, neighborhood clusters, the Wainwright Townhouses have been carefully designed to blend with the rolling countryside. Each group surrounds a private, landscaped green which separates the houses from the carports. All homes are entered from the green; all have views of woodland.

Natural building materials, brick, wood stained in muted earth colors and extensive planting further relate these modern, efficient homes to the Virginia hills.

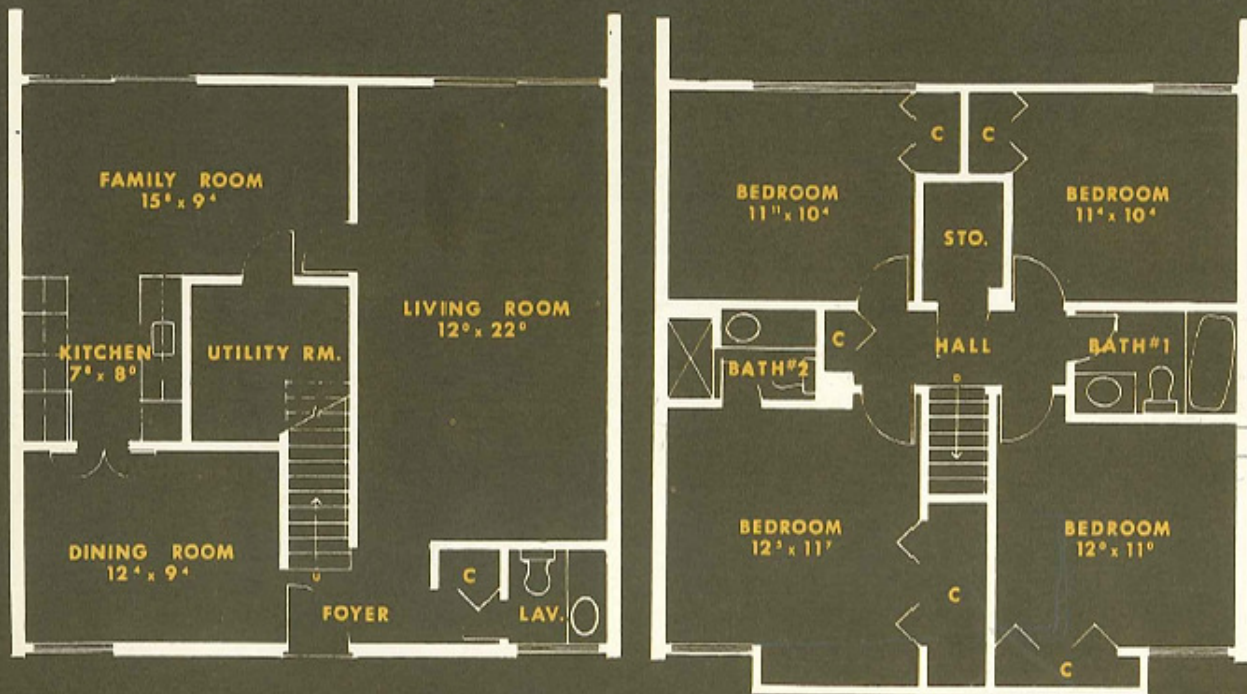
Make Your Choice

There are six Wainwright models. Each has an outdoor patio, parking area, large interior and exterior storage space, spacious bedrooms with large closets and central air-conditioning. Kitchens are color coordinated, featuring G.E. appliances, and family sized breakfast rooms. Every home has a ground floor powder room, most with vanities.





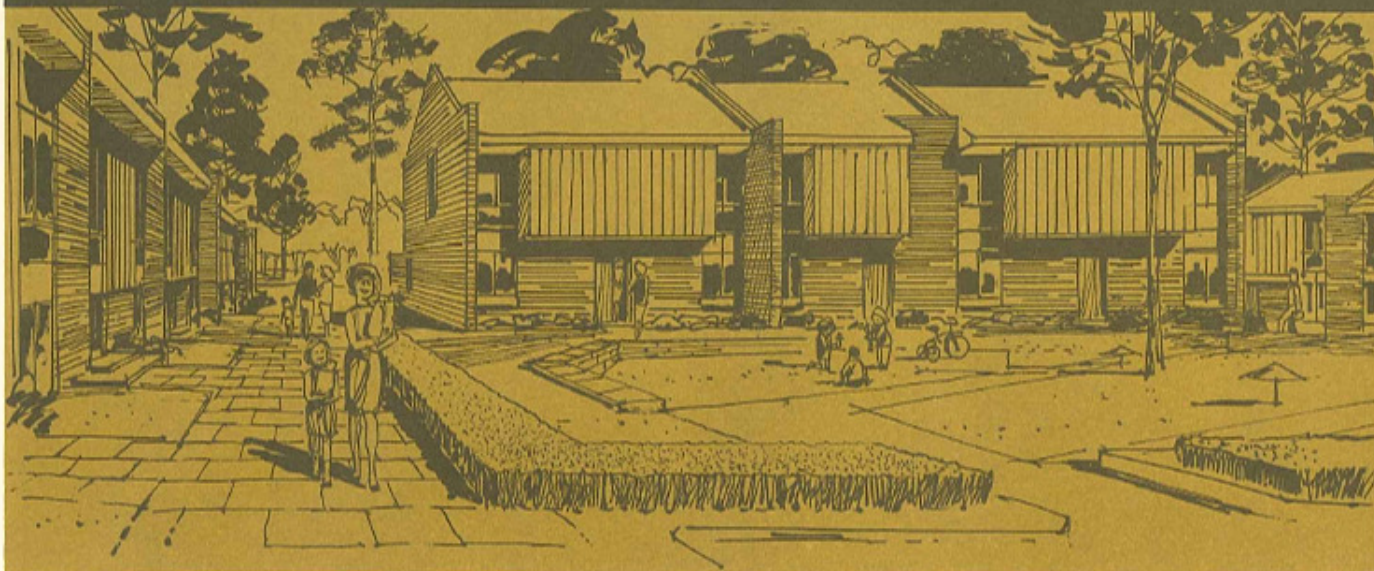
THE CHERITON—dining room is just right for entertaining,
with easy access to both kitchen and living room.



FIRST FLOOR

SECOND FLOOR

THE DILWYN—Large family room with sliding glass doors to outside court. Kitchen serves both family room and separate dining room. Huge long living room. Powder room off entrance foyer. Four bedrooms and two full baths upstairs. All dimensions approximate.



WAINWRIGHT CLUSTER RESTON, VIRGINIA

The Wainwright section of Reston is in Lake Anne Village, minutes away from beautiful Lake Anne, shopping, and the community center. Reston's new campus elementary school is a short walk away. Golf, tennis, boating, swimming, fishing, ball fields and riding are all nearby.

Life Reston style is a quiet retreat from the urban jam, or an active sports-filled community life. Or both. Have it your way.

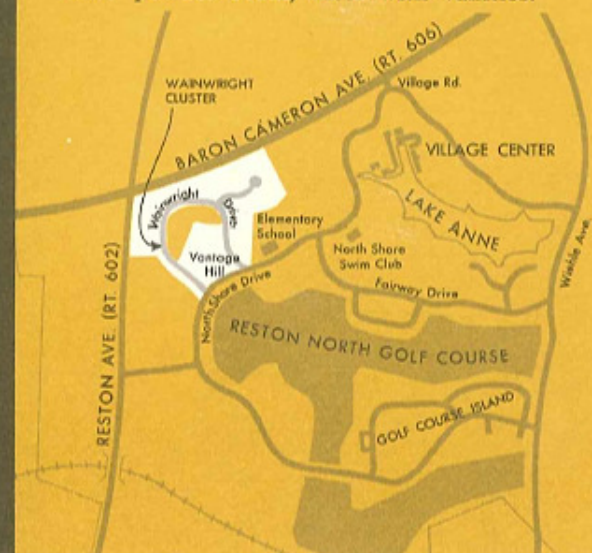
The Townhouses

Grouped in small, neighborhood clusters, the Wainwright Townhouses have been carefully designed to blend with the rolling countryside. Each group surrounds a private, landscaped green which separates the houses from the carports. All homes are entered from the green; all have views of woodland.

Natural building materials, brick, wood stained in muted earth colors and extensive planting further relate these modern, efficient homes to the Virginia hills.

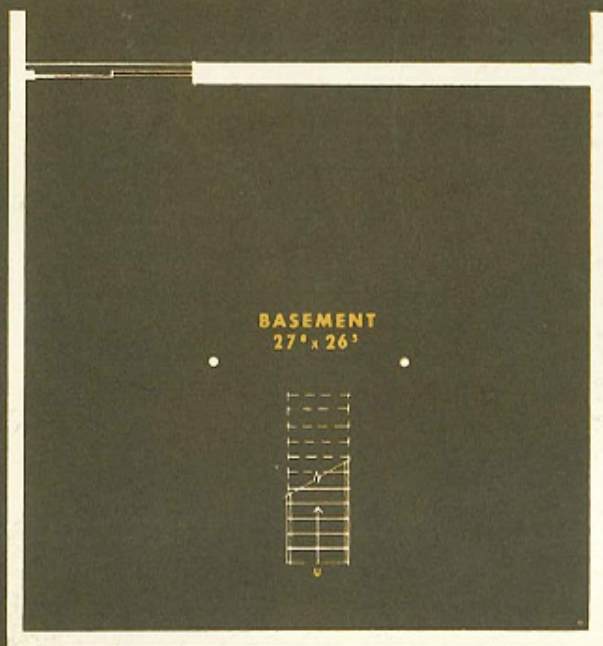
Make Your Choice

There are six Wainwright models. Each has an outdoor patio, parking area, large interior and exterior storage space, spacious bedrooms with large closets and central air-conditioning. Kitchens are color coordinated, featuring G.E. appliances, and family sized breakfast rooms. Every home has a ground floor powder room, most with vanities.

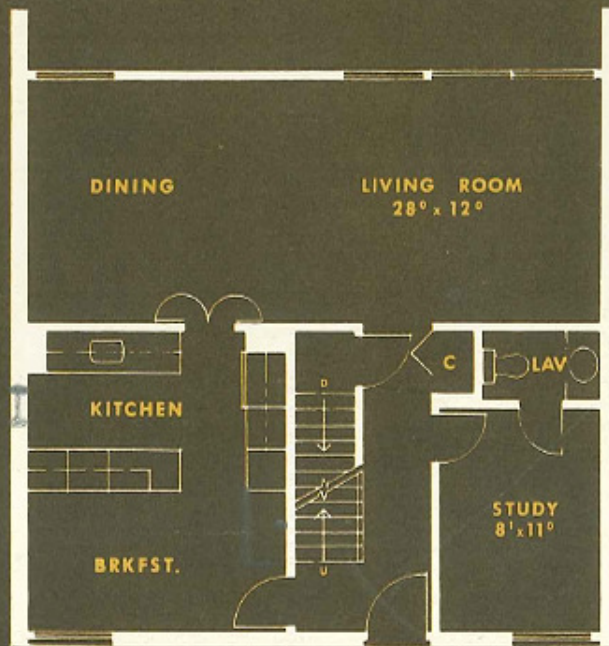




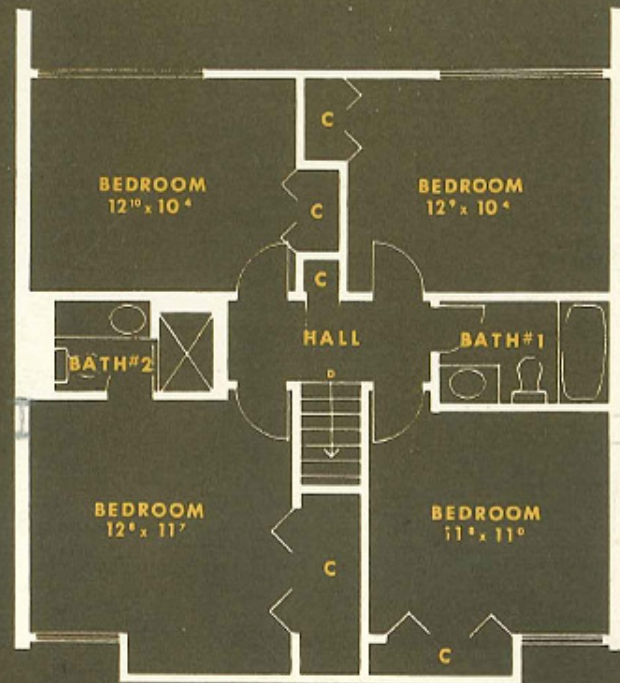
THE DILWYN—family room is only one of the striking features in this lovely, spacious home.



FIRST FLOOR



SECOND FLOOR



THIRD FLOOR

THE FIELDALE—largest and most luxurious Wainwright House. Full basement on first floor, living-dining room and study on the second. Kitchen has separate breakfast area and opens to front hallway. Four oversized bedrooms on third floor with two full baths. All dimensions approximate.

WAINWRIGHT CLUSTER RESTON, VIRGINIA

The Wainwright section of Reston is in Lake Anne Village, minutes away from beautiful Lake Anne, shopping, and the community center. Reston's new campus elementary school is a short walk away. Golf, tennis, boating, swimming, fishing, ball fields and riding are all nearby.

Life Reston style is a quiet retreat from the urban jam, or an active sports-filled community life. Or both. Have it your way.

The Townhouses

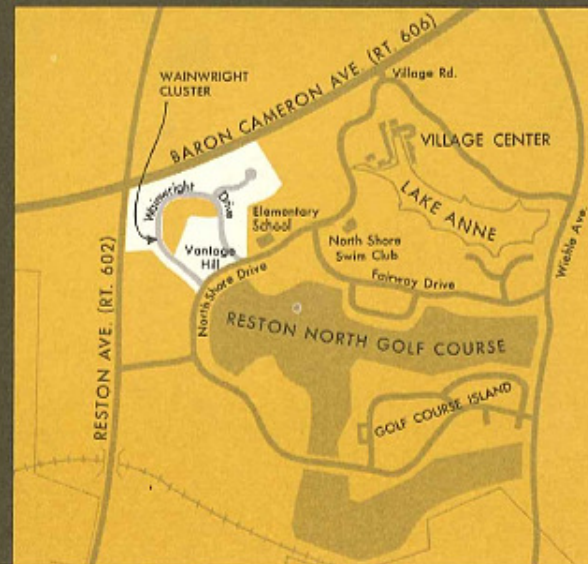
Grouped in small, neighborhood clusters, the Wainwright Townhouses have been carefully designed to blend with the rolling countryside. Each group surrounds a private,

landscaped green which separates the houses from the carports. All homes are entered from the green; all have views of woodland.

Natural building materials, brick, wood stained in muted earth colors and extensive planting further relate these modern, efficient homes to the Virginia hills.

Make Your Choice

There are six Wainwright models. Each has an outdoor patio, parking area, large interior and exterior storage space, spacious bedrooms with large closets and central air-conditioning. Kitchens are color coordinated, featuring G.E. appliances, and family sized breakfast rooms. Every home has a ground floor powder room, most with vanities.





THE FIELDALE—dining-living room is a full 28 feet in length. The beautiful glass-walled vista enhances the feeling of space.